

CERTIFICATE OF LOCATION OF GOVERNMENT CORNER

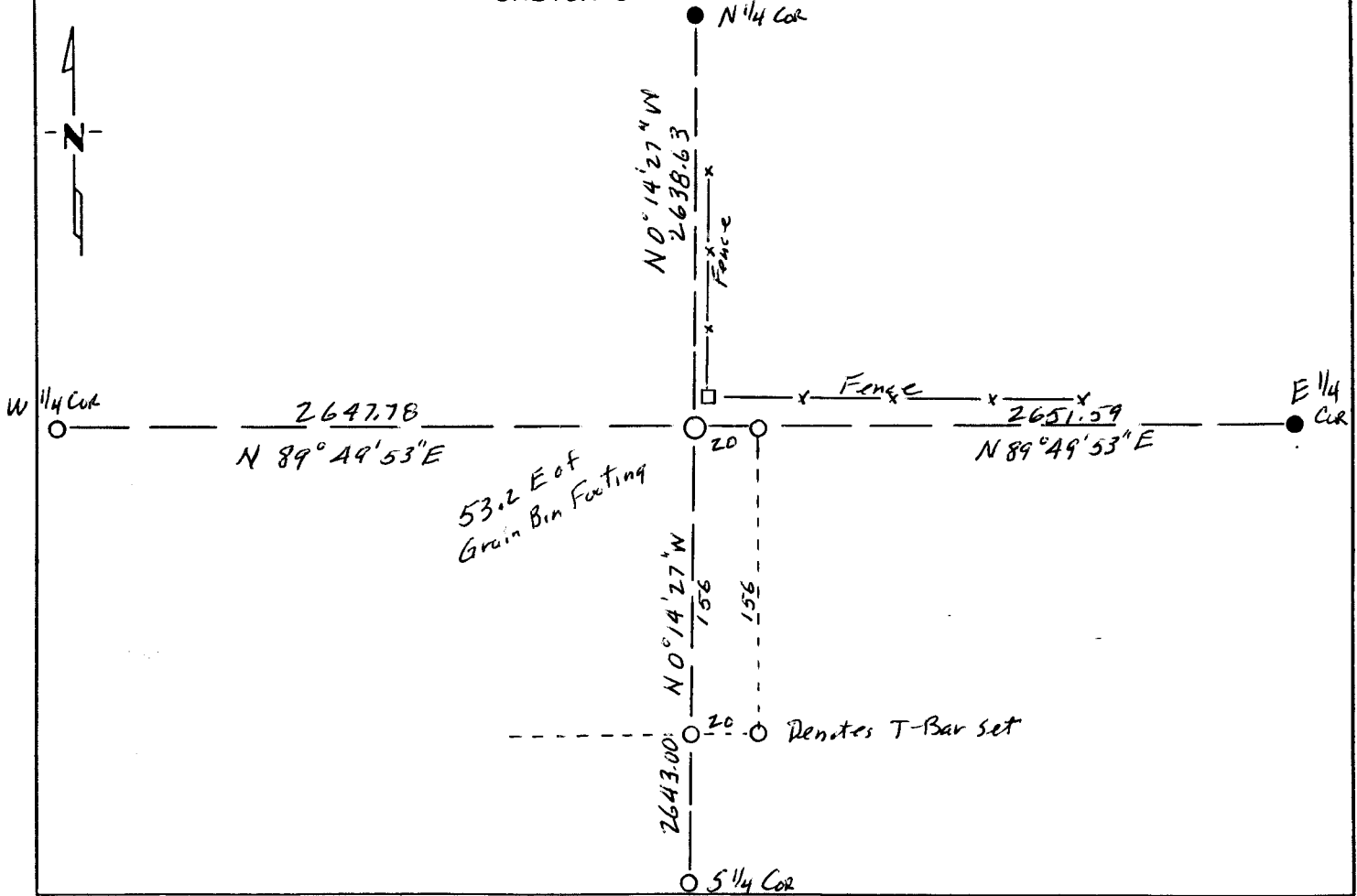
CENTER Corner of Section 9, Township 108, Range 41, 5 P.M.

STATE OF MINNESOTA, County of MURRAY

At the corner location shown on the sketch:

- On 5-30-2002 found a STONE Reported as Center of Section 9
DATE
- left monument as found, lowered monument, removed monument (explain)
- On 7-18-02 placed a IRON T-BAR AT TRUE CENTER OF SECTION 9
DATE 4.52 FT West and 12.80 FT South of the STONE

SKETCH OF REFERENCE TIES



Statement of evidence relative to this corner location is on back of page.

I hereby certify that this document and the data contained herein was prepared by me or under my direct supervision.

Scott J. Vickham SIGNATURE 7-16-2003 DATE

- Registration No. 12237
- Land Surveyor, Professional Engineer
 - County Surveyor, County Engineer

OFFICE OF THE REGISTER OF DEEDS
County of _____

I hereby certify that this document was filed in the Reg. of Deeds office at _____ .M. on the MAY 17 2004 day of _____ A.D., 19 _____

Register of Deeds Jeanne V. Johnson
By _____, Deputy

DOCUMENT NO. _____

Statement of Evidence:

No corner set by Original Gov't Survey.

A stone at the intersection of fence lines had been used by County Hwy. Dept. as center of Section 9. Origin of stone is unknown.

From May 2002 to July 2002 I, Gerald F. Vickerman, Relocated the missing corner for Section 9 and computed and marked the true center of Section 9